

# University of Arizona



Photo by Kirk Sibley



**OUR MISSION:** *To discover, educate, serve,  
and inspire*

**OUR VISION:**

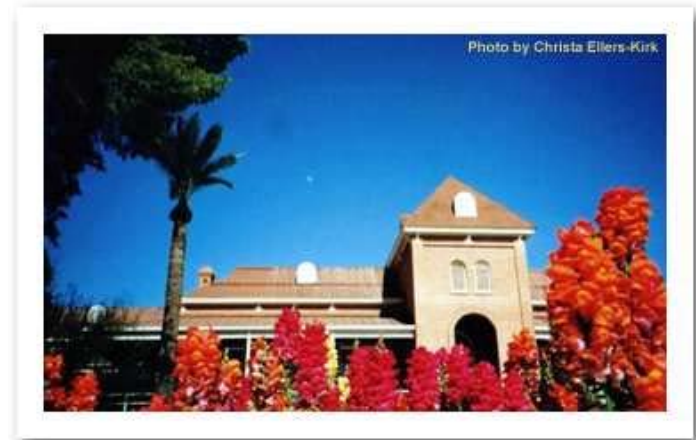
The University of Arizona is

- *An exceptional learning environment*
- *A place of possibility*
- *A destination for the world's best thinkers*



## Historical Overview:

- Founded in 1885 as a land-grant institution
- 1st class started in 1891
- Different college configurations have been used throughout but the Arts and Sciences, Agriculture, and Engineering have been present from the beginning.





- Expansion between the 1920s and 1940s brought forward Education, Law, Business, Fine Arts, Graduate College, Pharmacy. In the 50s and 60s, Nursing, Architecture, & Medicine were added.
- Student enrollment from 1950s to 1970s showed very rapid growth, averaging 1,200 additional students per year for 20 years.



## Recent transformations

- Sierra Vista campus reorganized in 1999 to become UA South
- Honors College created in 1999
- Public Health became a college in 2000





## Currently, 17 Colleges\* at UA main campus in Tucson

Agriculture and Life Sciences

Architecture & Landscape Architecture

Education

Eller College of Management

Engineering

Fine Arts

Graduate College

Honors College

Humanities

James E. Rogers

College of Law

Science

Social and Behavioral

Sciences

Optical Sciences Center\*

Arizona Health Sciences Colleges

Medicine

Nursing

Pharmacy

Public Health



## **UA South impacts:**

Sierra Vista (principal site)

Douglas

Eastern Pima County (co-located with Pima  
Community College East Campus) and in  
Vail

Potential future expansion in Santa Cruz and  
Pinal Counties





## UA Main Campus

- 121 bachelor's degree programs
- 116 master's degree programs
- 3 professional degree programs
- 84 doctorate degree programs

As of Spring 2004



## UA South

- 1 undergraduate degree unique to UA South
- 15 bachelor's degree programs, 4 master's programs/ 3 post-baccalaureate certificates offered in conjunction with UA Main Campus



# Student Enrollment Information





<b>All Students</b>	<b>2004</b>	<b>2003</b>	<b>2002</b>	<b>2001</b>
<b>Total Enrollment</b>	<b>36,932</b>	<b>37,083</b>	<b>36,847</b>	<b>35,747</b>
<b>Female</b>	<b>53.0%</b>	<b>52.7%</b>	<b>52.4%</b>	<b>52.3%</b>
<b>Resident*</b>	<b>71.1%</b>	<b>70.6%</b>	<b>69.7%</b>	<b>68.6%</b>
<b>Minority</b>	<b>25.1%</b>	<b>24.4%</b>	<b>23.8%</b>	<b>23.7%</b>
<b>Undergraduate</b>	<b>28,368</b>	<b>28,482</b>	<b>28,278</b>	<b>27,532</b>
<b>Full Time</b>	<b>86.7%</b>	<b>85.0%</b>	<b>83.7%</b>	<b>84.7%</b>
<b>Female</b>	<b>53.0%</b>	<b>53.1%</b>	<b>52.7%</b>	<b>52.7%</b>
<b>Resident*</b>	<b>72.3%</b>	<b>71.6%</b>	<b>70.6%</b>	<b>69.4%</b>
<b>Minority</b>	<b>27.3%</b>	<b>26.5%</b>	<b>25.9%</b>	<b>25.5%</b>
<b>Graduate/First Pro.</b>	<b>8,564</b>	<b>8,601</b>	<b>8,569</b>	<b>8,215</b>
<b>Full Time</b>	<b>68.9%</b>	<b>69.0%</b>	<b>67.8%</b>	<b>67.2%</b>
<b>Female</b>	<b>52.8%</b>	<b>51.2%</b>	<b>51.3%</b>	<b>51.0%</b>
<b>Resident*</b>	<b>67.1%</b>	<b>67.3%</b>	<b>66.7%</b>	<b>66.2%</b>
<b>Minority</b>	<b>18.1%</b>	<b>17.5%</b>	<b>17.3%</b>	<b>17.3%</b>
<b>Total FTE</b>	<b>34,018</b>	<b>33,807</b>	<b>33,089</b>	<b>32,460</b>
<b>Undergraduate</b>	<b>27,583</b>	<b>27,315</b>	<b>26,652</b>	<b>26,271</b>
<b>Graduate/First Pro.</b>	<b>6,435</b>	<b>6,492</b>	<b>6,436</b>	<b>6,189</b>



	2004	2003	2002	2001
<b>New Freshmen</b>	<b>5,725</b>	<b>5,958</b>	<b>5,808</b>	<b>5,949</b>
<b>Mean SAT</b>	<b>1118</b>	<b>1120</b>	<b>1101</b>	<b>1109</b>
<b>Mean ACT</b>	<b>23.7</b>	<b>23.6</b>	<b>23.4</b>	<b>23.7</b>
<b>Mean H.S. GPA</b>	<b>3.40</b>	<b>3.40</b>	<b>3.36</b>	<b>3.35</b>
<b>Mean H.S. Acad. GPA</b>	<b>3.33</b>	<b>3.32</b>	<b>3.28</b>	<b>3.27</b>
<b>Flinn Scholars</b>	<b>10</b>	<b>14</b>	<b>18</b>	<b>15</b>
<b>National Merit</b>	<b>76</b>	<b>58</b>	<b>64</b>	<b>68</b>
<b>Minority</b>	<b>28.0%</b>	<b>25.9%</b>	<b>24.0%</b>	<b>24.5%</b>
<b>Minority (AZ Residents)</b>	<b>33.3%</b>	<b>31.1%</b>	<b>29.5%</b>	<b>30.6%</b>
<b>Full Time</b>	<b>97.2%</b>	<b>97.0%</b>	<b>96.6%</b>	<b>96.3%</b>
<b>Female</b>	<b>53.9%</b>	<b>54.4%</b>	<b>53.6%</b>	<b>52.5%</b>
<b>Resident*</b>	<b>66.9%</b>	<b>67.3%</b>	<b>65.1%</b>	<b>62.6%</b>
<b>New Transfers</b>	<b>1,928</b>	<b>1,845</b>	<b>1,959</b>	<b>2,086</b>
<b>Minority</b>	<b>31.5%</b>	<b>31.3%</b>	<b>28.6%</b>	<b>27.8%</b>
<b>Minority (AZ Residents)</b>	<b>36.4%</b>	<b>35.8%</b>	<b>34.6%</b>	<b>33.2%</b>
<b>Full Time</b>	<b>76.8%</b>	<b>75.6%</b>	<b>73.1%</b>	<b>74.8%</b>
<b># from Pima C.C.</b>	<b>825</b>	<b>768</b>	<b>750</b>	<b>797</b>
<b>% from Pima C.C.</b>	<b>42.8%</b>	<b>41.6%</b>	<b>38.3%</b>	<b>38.2%</b>
<b>Total New Undergrad. Students</b>	<b>7,653</b>	<b>7,803</b>	<b>7,767</b>	<b>8,035</b>

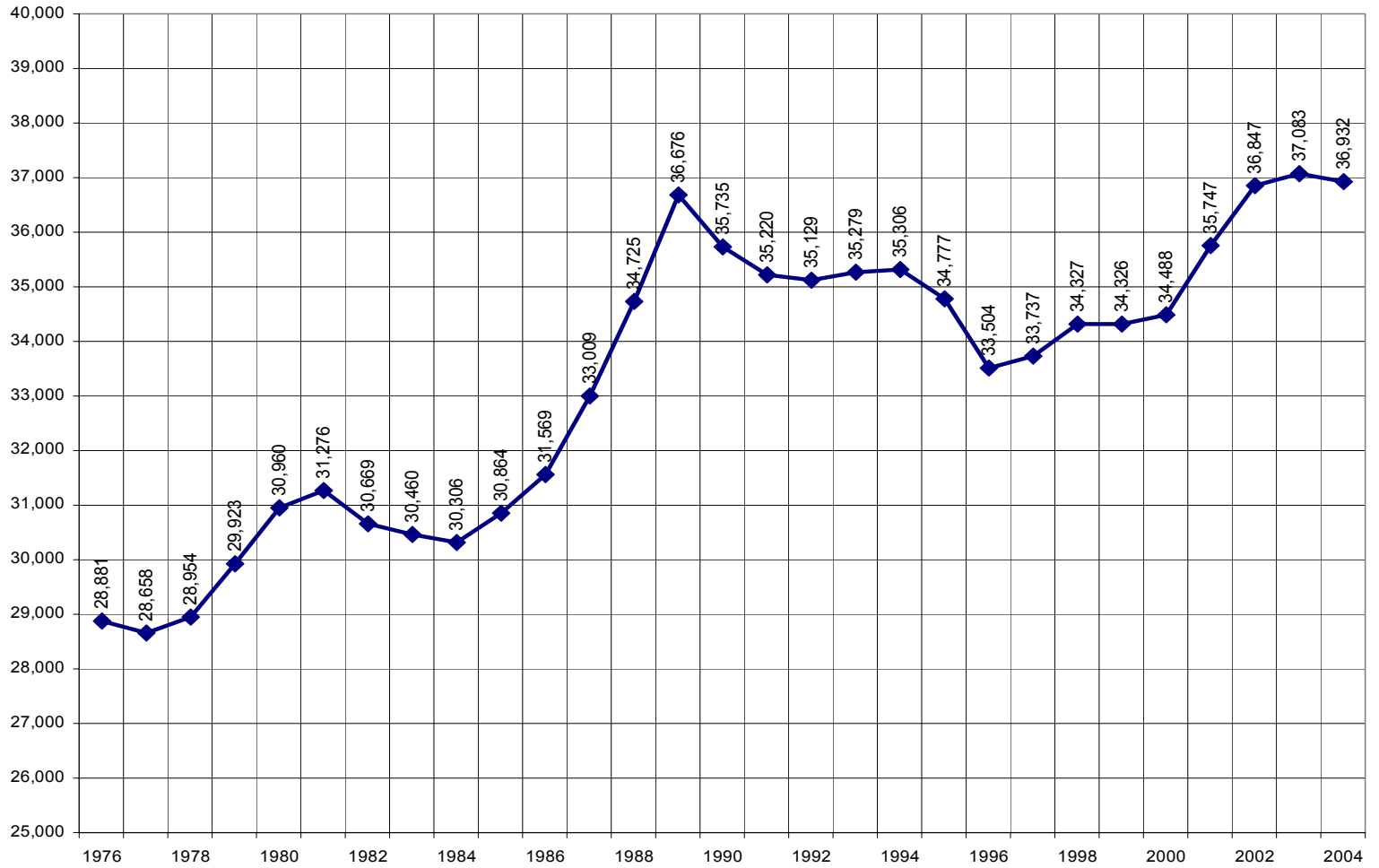


## Persistence and Graduation Rates

	<b>2004</b>	<b>2003</b>	<b>2002</b>	<b>2001</b>
<b>One Year Persistence Rate</b>	<b>79%</b>	<b>77%</b>	<b>76%</b>	<b>78%</b>
<b>Four Year Graduation Rate</b>		<b>31%</b>	<b>31%</b>	<b>29%</b>
<b>Six Year Graduation Rate</b>	<b>57% anticipated</b>	<b>55%</b>	<b>55%</b>	<b>54%</b>

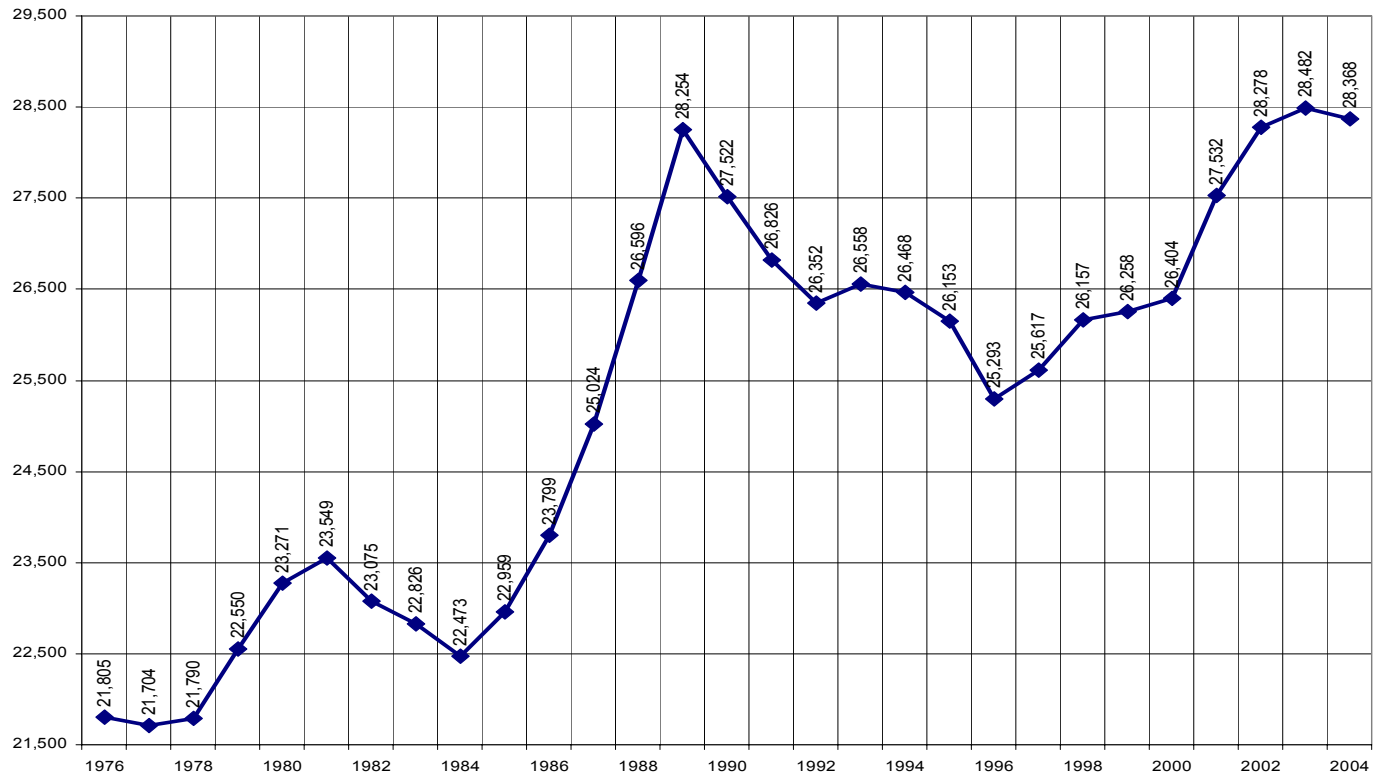


## Total Student Enrollment Trend



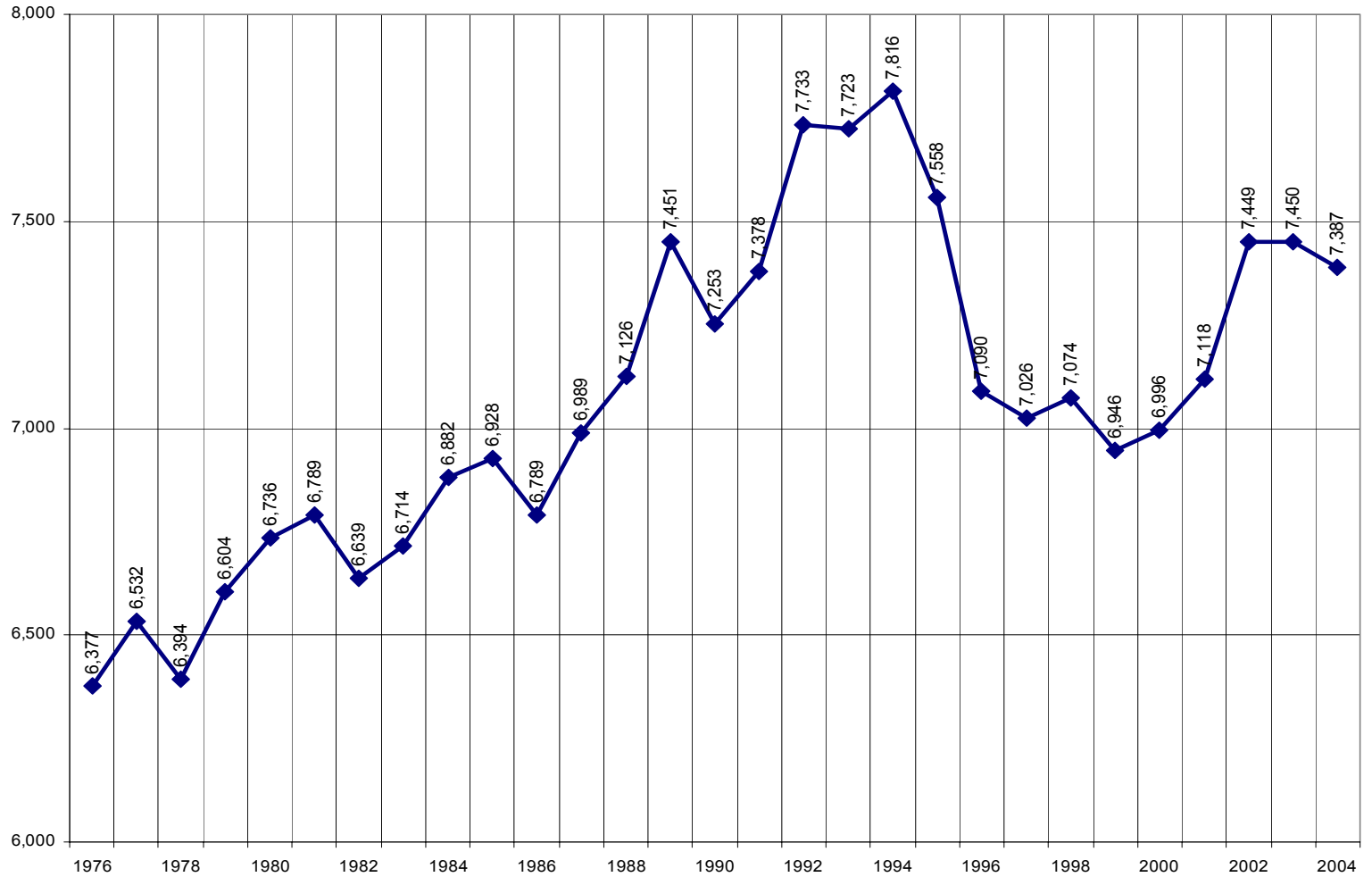


## Undergraduate Student Enrollment Trend



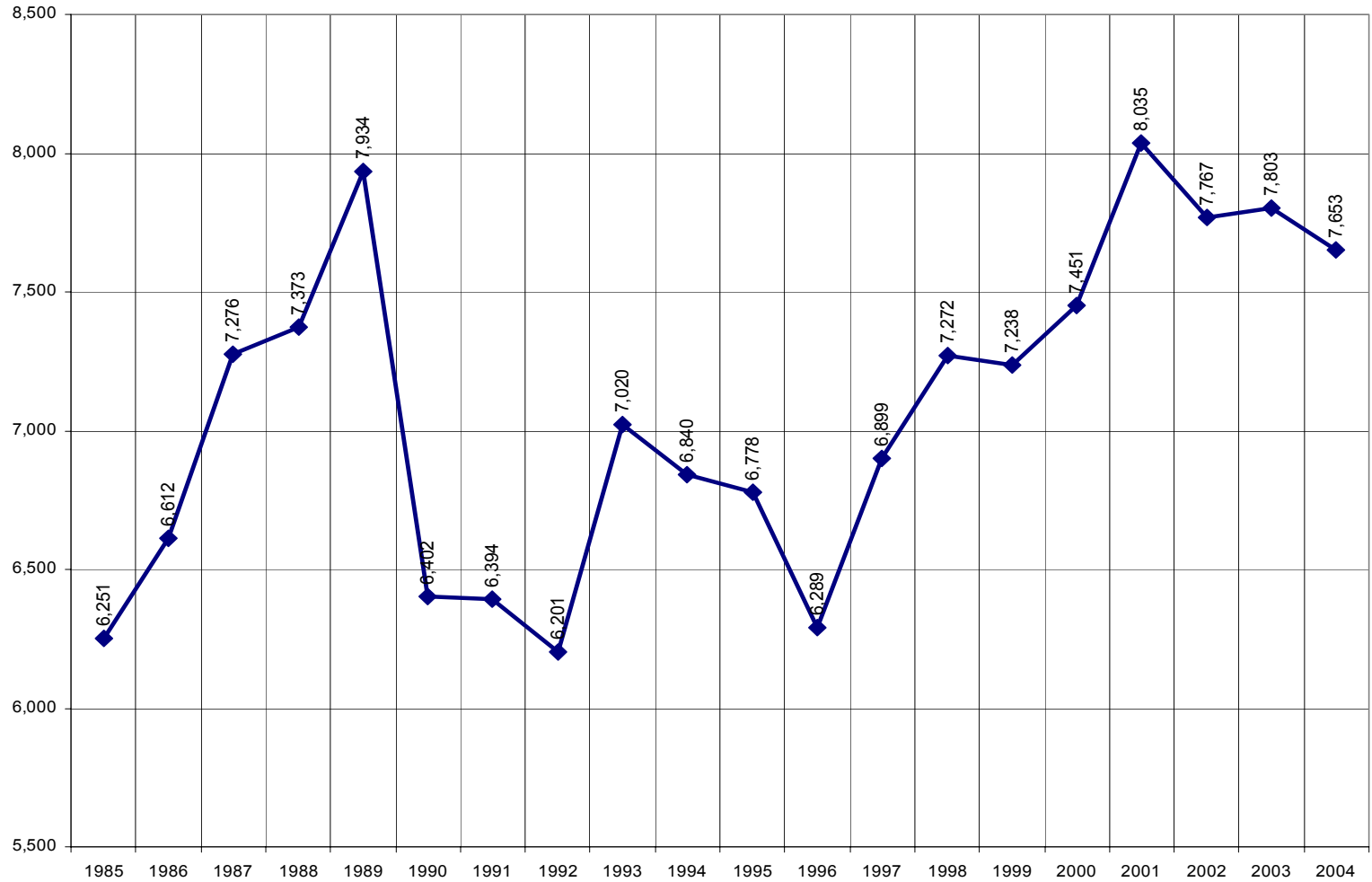


## Graduate Student Enrollment Trend





## New Undergrad Student Enrollment Trend





## 1<sup>st</sup>-Time Full-Time Freshmen (FTFT) Retention from 1<sup>st</sup> to 2<sup>nd</sup> Yr

	Fall 2002 Returning Fall 2003			Fall 2003 Returning Fall 2004			Fall 2004 Returning Fall 2005		
	Res	Non-Res	Total	Res	Non-Res	Total	Res	Non-Res	Total
<b>African American</b>	81.8%	69.7%	77.5%	77.9%	65.6%	73.1%	-	-	-
<b>American Indian</b>	58.1%	87.5%	60.6%	67.4%	42.9%	64.2%	-	-	-
<b>Asian American</b>	80.0%	70.5%	77.6%	85.2%	83.5%	84.8%	-	-	-
<b>Hispanic</b>	78.4%	67.6%	76.8%	79.3%	75.2%	78.8%	-	-	-
<b>White</b>	78.0%	74.2%	76.6%	80.7%	77.5%	79.5%	-	-	-
<b>Non Resident Alien</b>	-	88.5%	88.5%	-	80.3%	80.3%	-	-	-
<b>Unknown / Other</b>	77.5%	81.1%	79.1%	80.8%	77.5%		-	-	-
	<b>77.8%</b>	<b>74.8%</b>	<b>76.7%</b>	<b>80.4%</b>	<b>77.1%</b>	<b>79.3%</b>	-	-	-
Minority Percent	77.4%	69.5%	75.8%	79.8%	73.7%	78.7%	-	-	-

## UA Fall 2004 enrollment (excludes 429 FTE in Medicine)



College/Program	Lower Division		Upper Division		Graduate		TOTAL	
	SCH	FTE	SCH	FTE	SCH	FTE	SCH	FTE
Agriculture & Life Sciences	5,883	392	11,930	994	4,184	418	21,997	1,805
Architecture	1,885	126	2,139	178	1,231	123	5,255	427
Arizona International	0	0	694	58	0	0	694	58
Eller College of Mgt.	16,745	1,116	22,419	1,868	6,200	620	45,364	3,605
Education	1,632	109	11,107	926	6,730	673	19,469	1,707
Engineering	6,502	433	11,127	927	7,038	704	24,667	2,065
Fine Arts	15,064	1,004	10,951	913	3,098	310	29,113	2,227
Health Programs	2,375	158	1,859	155	841	84	5,075	397
Humanities	45,161	3,011	17,894	1,491	2,837	284	65,892	4,786
Interdisciplinary Programs	643	43	1,006	84	4,456	446	6,105	572
Law	0	0	0	0	7,176	718	7,176	718
Military Science	826	55	688	57	0	0	1,514	112
Nursing	375	25	3,666	306	1,116	112	5,157	442
Pharmacy	62	4	3,370	281	2,271	227	5,703	512
Public Health	171	11	990	83	928	93	2,089	187
Science	53,941	3,596	16,280	1,357	7,957	796	78,178	5,748
Social & Behavioral Sciences	19,371	1,291	31,877	2,656	7,728	773	58,976	4,721
University College	51,724	3,448	183	15	150	15	52,057	3,479
<b>MAIN CAMPUS TOTAL</b>	<b>222,360</b>	<b>14,824</b>	<b>148,180</b>	<b>12,348</b>	<b>63,941</b>	<b>6,394</b>	<b>434,481</b>	<b>33,567</b>
UA South	0	0	4,924	410	410	41	5,334	451
<b>GRAND TOTAL</b>	<b>222,360</b>	<b>14,824</b>	<b>153,104</b>	<b>12,759</b>	<b>64,351</b>	<b>6,435</b>	<b>439,815</b>	<b>34,018</b>



## Undergraduate Students – UA South Fall 2004

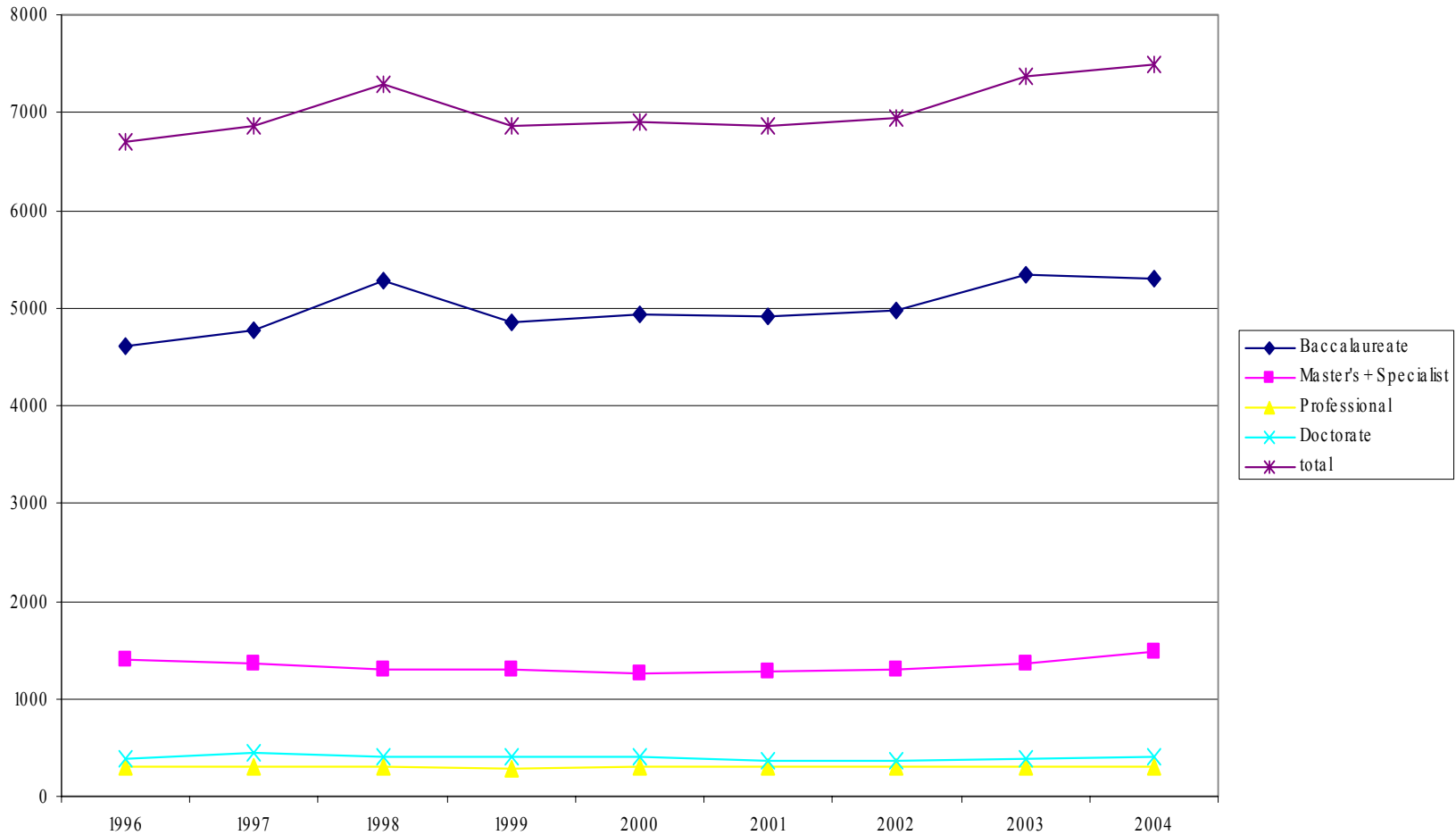
	1-6 Hours		7-11 Hours		12+ Hours		Grand
	Non-Res.	Resident	Non-Res.	Resident	Non-Res.	Resident	Total
Freshman	0	0	1	2	1	5	9
Sophomore	0	10	0	5	5	53	73
Junior	2	22	2	31	20	187	264
Senior	0	47	4	36	28	206	321
Unclassified	2	14	0	2	0	8	26
<b>Subtotal</b>	4	93	7	76	54	459	693

## Graduate/First Professional

	1-6 Hours		7-11 Hours		12+ Hours		Grand
	Non-Res.	Resident	Non-Res.	Resident	Non-Res.	Resident	Total
First Professional	0	0	0	0	0	0	0
Graduate	2	79	5	10	4	6	106
<b>Subtotal</b>	2	79	5	10	4	6	106
<b>TOTAL HEADCOUNT</b>	6	172	12	86	58	465	799



## Degrees Awarded Trend Data



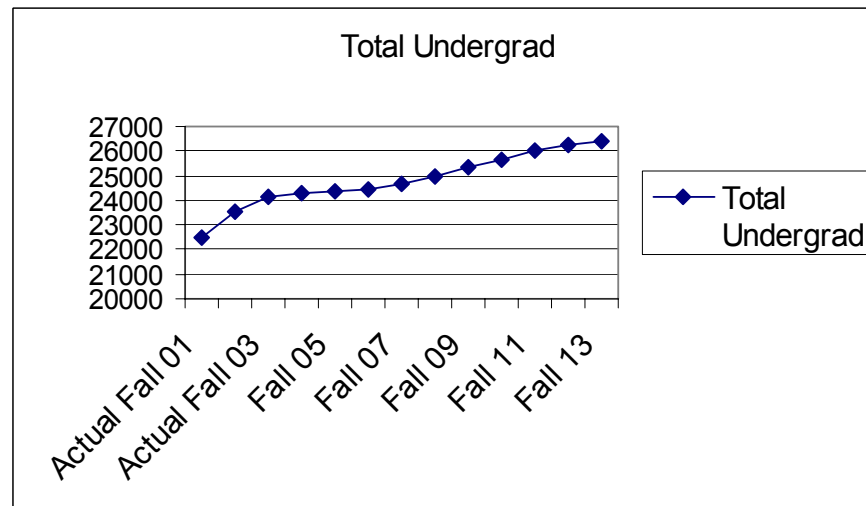
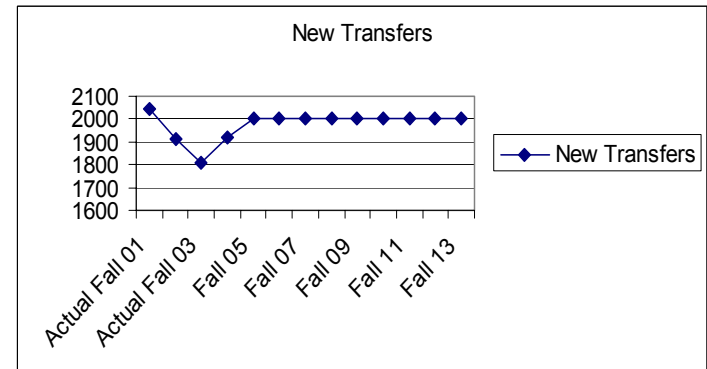
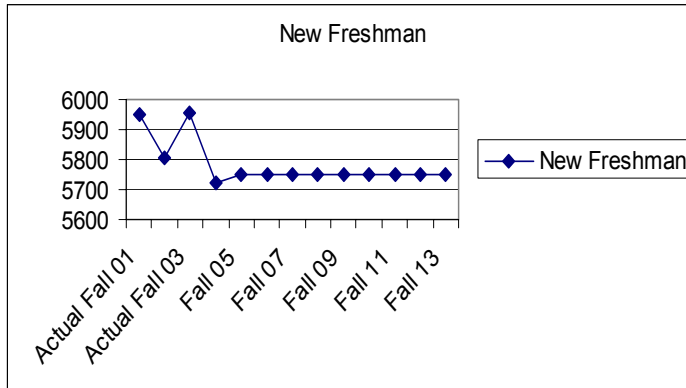


## Enrollment Projections: Undergraduate Students

- Achieve steady state for new freshmen of 5,750 from 2005 forward
- Achieve steady state for new transfer students of 2,000 from 2005 forward
- Undergraduate population growth through increased retention rate: Move 6 percentage points over 7 years
- Retain 85% of first year students by Fall 2012

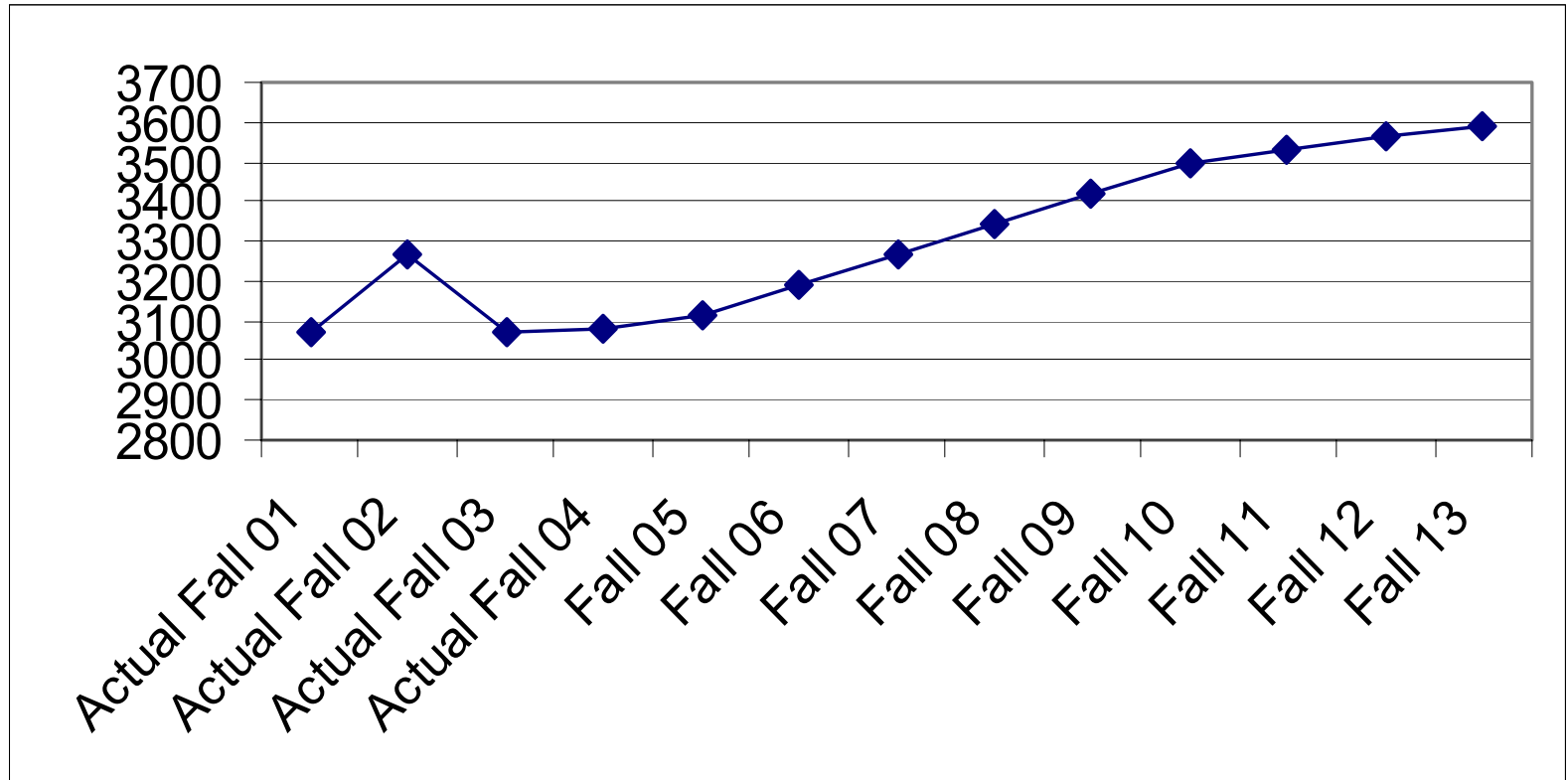


# Enrollment Projections





## General Goals: 1<sup>st</sup> yr Prof and Graduate Students



UA's desire as AAU institution to increase graduate student population



# Financial Information





# All Funds Budget

## 1999-00

Main Campus 17,184,585 182,447,053 10,868,975 1,068,592 31,277,307 11,740,678 119,613,236  
 College of Medicine 15,293,302 74,213,675 9,964,710 ----- 365,853 82,960 99,900,500  
 Total 32,477,887 256,660,728 20,833,685 1,068,592 31,643,160 11,803,638 354,487,690

## 2000-01

Main Campus 13,776,258 196,289,502 19,518,426 454,732 26,594,565 409,537 256,842,819

College of Medicine 12,414,787 93,167,793 7,046,132 ----- 529,462 52,994 113,211,167

Total 26,191,045 289,457,295 26,564,558 454,732 27,124,027 462,531 370,053,986

## 2001-02

Main Campus 23,844,676 204,619,483 209,403,342 508,256 623,588,600 1,009,120 278,659,770 702,504,900

College of Medicine 11,698,726 79,484,631 3,706,526 ----- 385,332 10,000 95,282,215

Total 35,543,402 285,100,629 26,646,868 508,256 23,123,649 3,019,120 373,941,924

## 2002-03

Main Campus 30,831,172 316,124,050 26,272,396 2,110,561 25,093,372 3,315,195 403,746,747

College of Medicine 14,786,674 104,265,960 2,241,792 ----- 296,422 ----- 121,590,247 883,304,100

Total 45,617,846 420,389,410 28,514,188 2,110,561 25,389,794 3,315,195 525,336,994

1997-98 48,896,800 365,820,300 847,717,100

1998-99 538,180,979 382,209,530 920,390,509

1999-00 578,371,956 402,217,364 980,619,320

2000-01 613,766,042 426,401,153 1,040,167,195

### By Program

Note: Main Campus is including College of Nursing, Pharmacy, Public Health and AHSC Administration. 980,619,320

80 2000-01 613,766,042 426,401,153 1,040,167,195

### Fact Book 2003-04

State & Local Institutional 2001-02 668,783,434 411,002,498 1,079,784,932

BY SOURCE OF FUNDS (IN THOUSANDS)

Source: National Science Foundation, Academic Science R & D Funds  
 TO 2002-03 Federal Govt. Govts. Industry Funds Other 415,317,264 1,153,935,900

1 University of California-Los Angeles \$ 693,801 \$ 312,858 \$ 59,365 \$ 32,539 \$ 190,229 \$ 98,810

2 University of Wisconsin-Madison 604,143 304,009 35,317 17,237 187,924 59,656

3 University of Michigan 600,523 396,117 5,113 34,439 120,508 44,346

4 University of Washington 589,626 435,103 11,716 43,312 88,309 11,186

5 University of California-San Diego 556,533 343,276 20,842 36,845 101,503 54,067

6 University of California-San Francisco 524,975 277,489 21,902 35,759 110,652 79,173

7 University of Minnesota 463,011 264,289 58,053 26,454 79,757 33,458

8 Pennsylvania State University 458,066 245,951 23,504 67,658 112,417 8,536

All funds includes Main Campus & College of Medicine. State funds includes Collections and other receipts. All dollars actual except for 2003-04, data do not include mandatory and voluntary transfers to plant funds for major and minor capital projects.

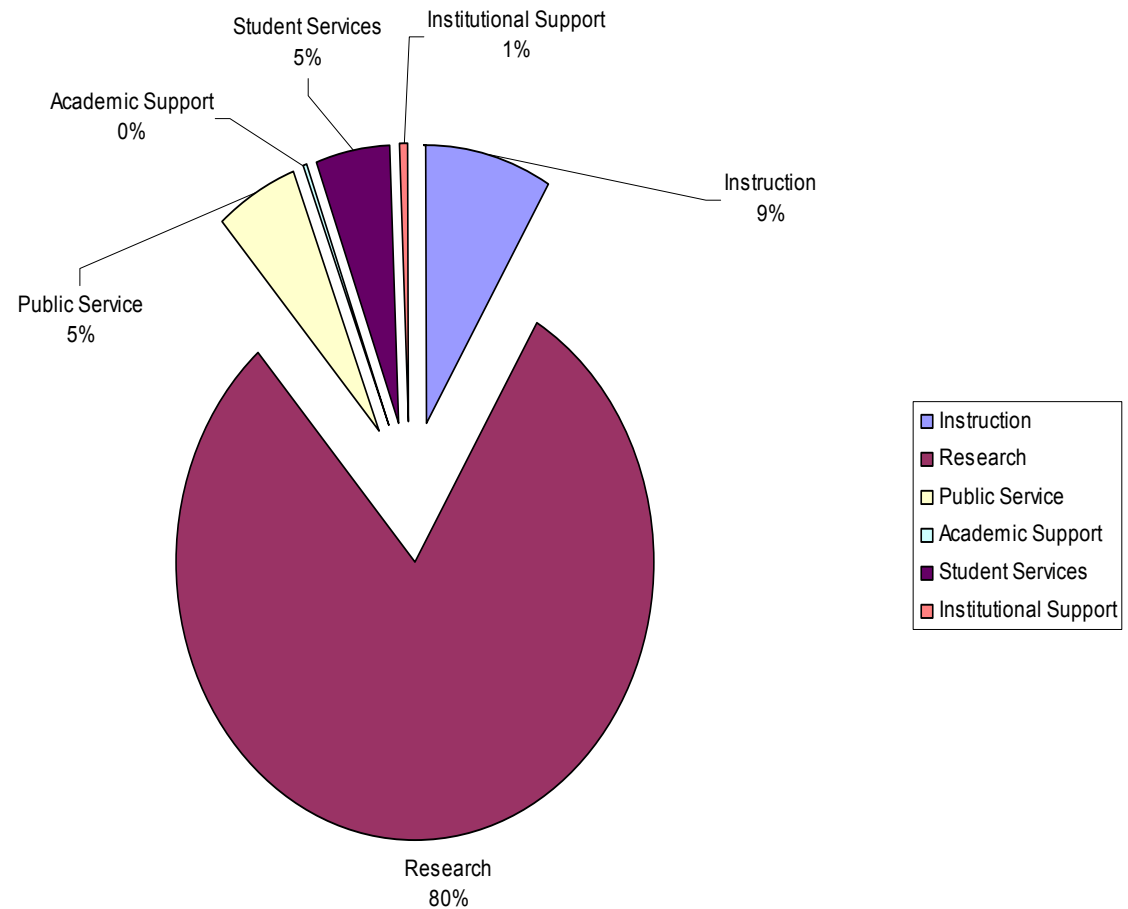


## Gifts and Grants (2002-03)

Instruction	45,617,846
Research	420,389,410
Public Service	28,514,188
Academic Support	2,110,561
Student Services	25,389,794
Institutional Support	3,315,195
TOTAL	525,336,994



## Gifts and Grants 03-04





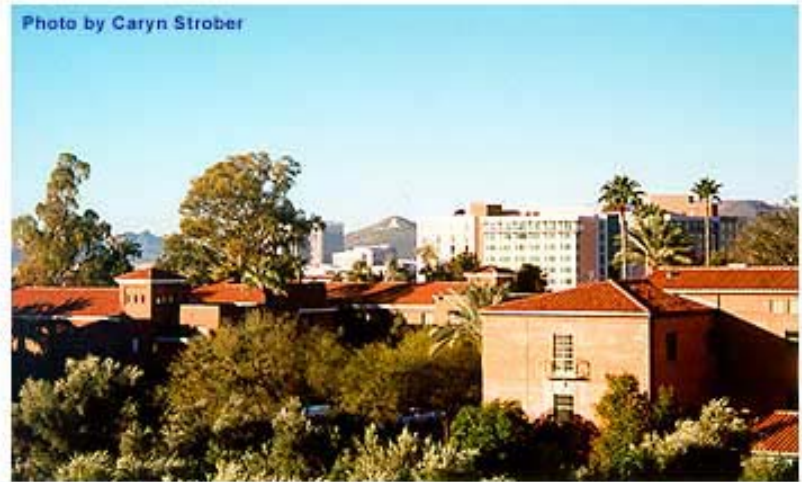
## FY 2004 Technology and Research Initiative Fund expenditures

Access & Workforce Dev.	\$1,964,711
Biosciences/Biotechnology	\$3,852,669
Technology Transfer	\$558,834
Optical Sciences	\$4,480,050
Internet Technology & Commerce	\$4,859,477
Water/Economic Dev./Sustain.	\$1,667,088
TOTAL	\$17,382,829



# UA as a workplace

Photo by Caryn Strober





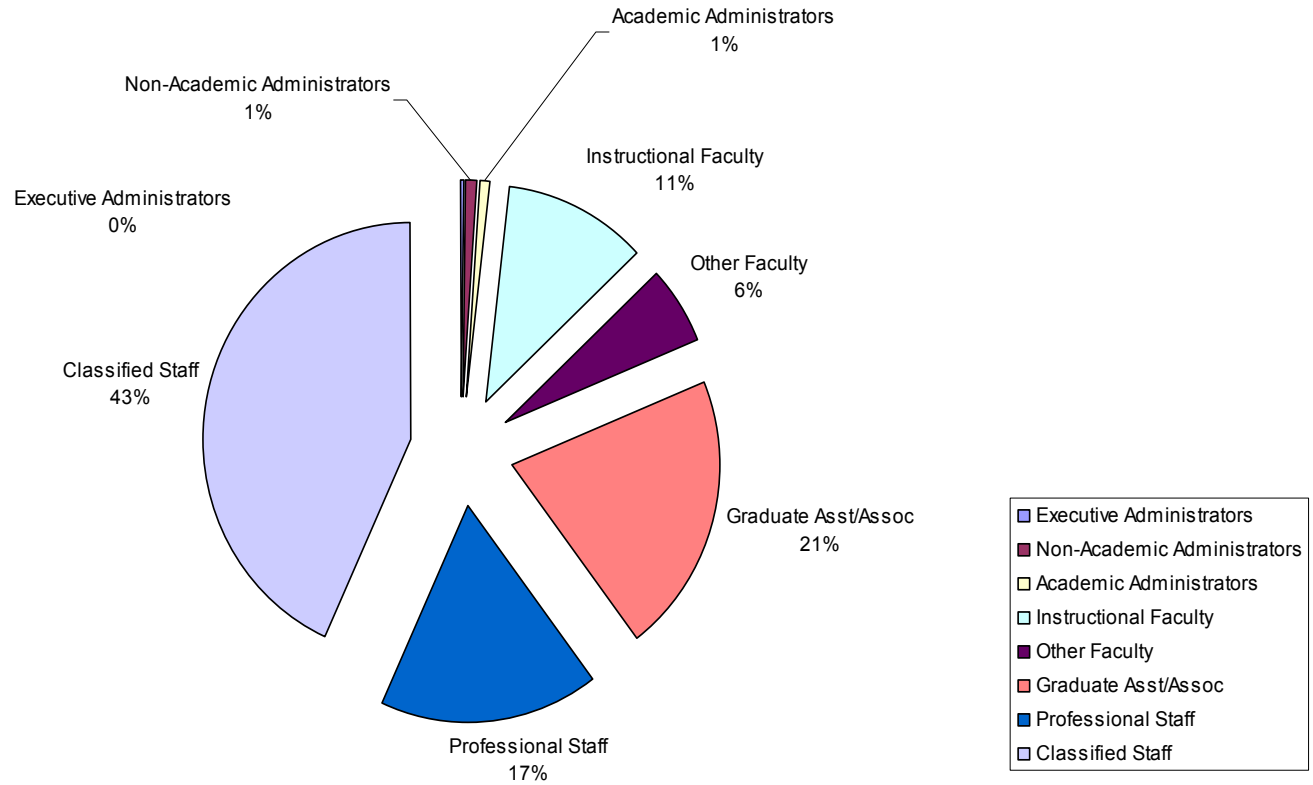
## UA Employees

2003-04

Executive Administrators	55
Non-Academic Administrators	109
Academic Administrators	112
Instructional Faculty	1,540
Other Faculty	841
Graduate Asst/Assoc	2,906
Professional Staff	2,384
Classified Staff	6,088
TOTAL	14,035



# UA Employees





**OUR MISSION:** To *discover, educate, serve, and inspire*

**OUR VISION:** The University of Arizona is

- *An exceptional learning environment*
- *A place of possibility*
- *A destination for the world's best thinkers*

